

# Discovery Clean Water Alliance

## CAPITAL PROJECT PROFILE

**Project Name:** SCTP Fire Pump Controller Replacement

**Project Number:** RA07-19-1

**Form Prepared/Updated:** March 2016

**Project Type:** Existing Asset – Repair

Existing Asset – Replacement

New Asset – Capacity

New Asset – Regulatory

New Asset – Level of Service

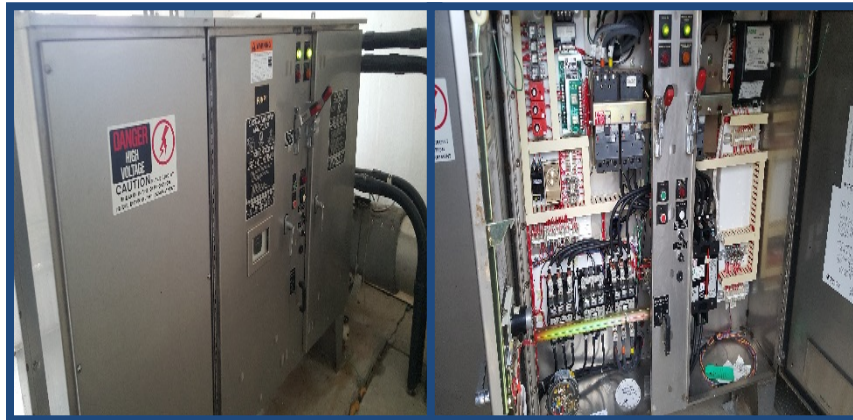
### Project Definition:

**Objective.** The project will ensure long-term functionality of the onsite fire pump system by replacing the existing fire pump controllers, which are now obsolete and unreliable.

**Scope of Work.** The project will replace the two existing fire pump controllers that serve the two onsite fire protection pumps. The fire controllers and breakers were recently rebuilt, however the parts are now obsolete and the components are no longer available. Replacement of these controllers will require a shutdown of the main power to the facility as the controllers are hard-wired directly to the transformer providing power to the area of the plant.

**Cost Allocation.** The project costs are apportioned to Battle Ground and the District according to the Salmon Creek Treatment Plant and Outfall allocated capacity: 3.47 mgd (23.2%) for Battle Ground, and 11.48 mgd (76.8%) for the District. For additional information related to this project, see the *Salmon Creek Wastewater Treatment Plant Maintenance Assessment, CH2M HILL, March, 2016*

### Photos (if available):



*Fire Pump Control Cabinet*

*Inside Fire Pump Control Cabinet*

### Budget Information:

Project Cost Estimate

Total Project Cost:	\$170,000
Construction Cost:	\$130,000
Basis of Estimate -	
Year Completed:	2016
Estimate Classification:	Class 3

Project Cost Allocation

Battle Ground:	23.2%	\$40,000
Clark County:	0%	\$0
District:	76.8%	\$130,000
Ridgefield:	0%	\$0
Total:	100%	\$170,000

### Schedule Information:

<u>Activity</u>	<u>Year</u>
Planning	2016
Permitting	2018
Real Property/ROW	N/A
Design	2018
Bid	2019
Construction	2019

